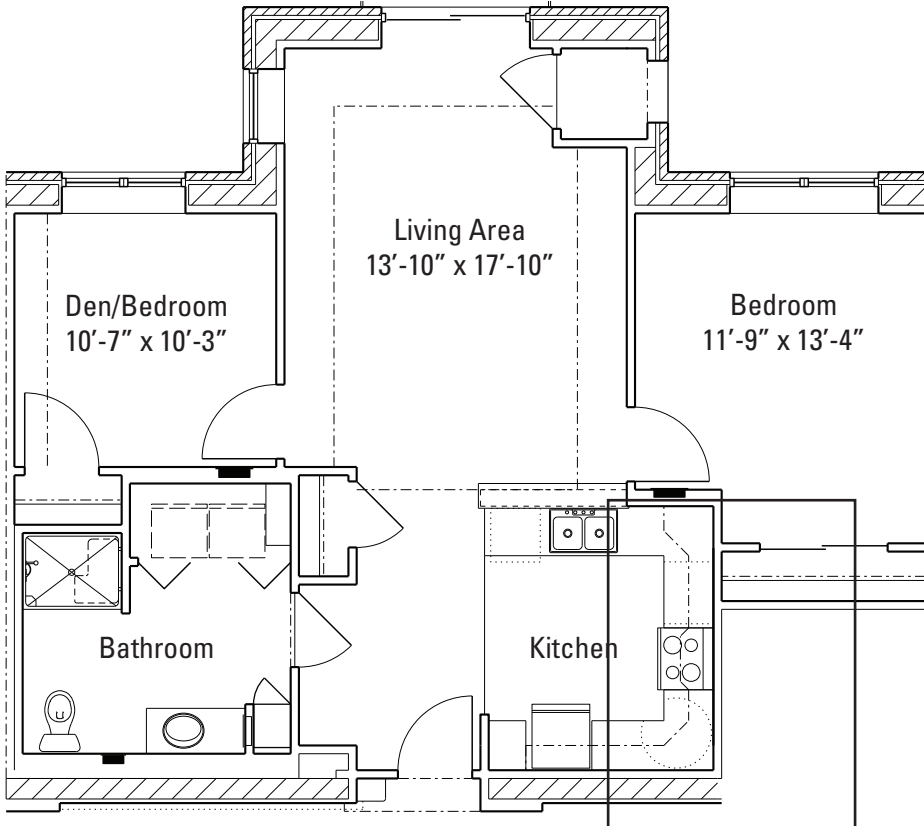


The Kinsale

Independent living, two-bedroom deluxe apartment



- Two-bedroom Kinsale apartments feature a living room with ample space for a dining set, a den and a modern kitchen including a dishwasher.

All independent living apartments provide spacious closets and a washer and dryer.

First floor Kinsale residences have a patio; those on the second and third floors, a Juliette balcony.

In 1854, eight intrepid Sisters of Mercy from Kinsale, County Limerick, left Ireland and settled in San Francisco, establishing the first education and healthcare ministries by the Sisters of Mercy on the west coast of the United States.

The dynamic and mindful spirit of the Sisters from Kinsale inspires Mercy Circle's independent living community, where residents enjoy a lifestyle that is active and engaged.

